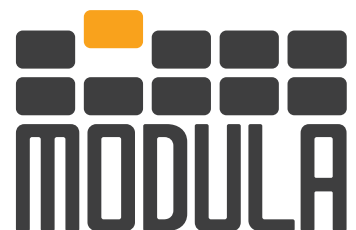
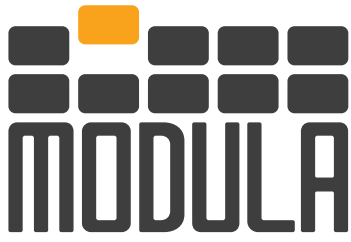




Modula World

Think Vertical, Think Modula





MODULA CLIMATE CONTROL

ALL THE ADVANTAGES OF A LIFT, TEMPERATURE-CONTROLLED

- STANDALONE STRUCTURE
- TEMPERATURE CONTROL FROM +2°C TO +25°C
- TECHNOLOGY APPLICABLE THROUGHOUT THE LIFT RANGE
- RELATIVE HUMIDITY CONTROL $\geq 5\%$
- EASY ACCESS TO STORED MATERIALS


MODULA
LIFT



MODULA CLIMATE CONTROL

Modula Climate Control has been designed to **store material sensitive to changes in temperature and humidity**, requiring careful control of storage conditions to avoid deterioration.

We have broadened the range of possible applications, making Modula Lift automated vertical warehouses even more flexible, all the while maintaining their advantages and features.

COMPONENTS

- **External covering consisting of a metal structure, fastened to the automated vertical warehouse, on which multilayer painted panels in rigid polyurethane foam, 60 mm thick, are installed, designed to insulate the internal environment while maintaining constant temperature and humidity conditions.**
- **Air handling unit (AHU) and related air distribution ducts**
- **Command and control system**
- **Depending on climate conditions, the following may be necessary:**
 - **post-heating element**
 - **dehumidification unit.**



**IDEAL FOR STORING PRODUCTS
SAFELY AT CONTROLLED
TEMPERATURES**

TECHNICAL SPECIFICATIONS

Height: from 4,100 mm to 14,100 mm

Unit height increment: 200 mm

Tray storage pitch: 25 mm

Tray width: from 1,500 mm to 4,100 mm

Tray depth: 654 - 857 - 1,257 mm

Net tray payload: 250 - 500 - 750 - 990 kg

Total net payload: from 40,000 kg to 80,000 kg (depending on model and configuration)

Total gross unit payload: from 50,000 kg to 90,000 kg (depending on model and configuration)

Throughput: up to 120 trays per hour (depending on the configuration)

Operator interface: industrial console with 10.4" touchscreen technology

Type of bay: internal

Maximum product height: 695 mm (bay S)

Number of windows: depending on configuration

Useful window opening: ME: 1,064x825 mm - MA: 1,064x1,025 mm

MC: 1,064x810 - 794 - 925 mm - MX: 1,064x1,010 - 994 - 1,125 mm

ML: 1,064x1,010 - 994 - 994 mm

Automatic weight check on tray return

Dynamic tray height storage

Zinc-coated steel structure

Multiple payload tray management

MODULA CLIMATE CONTROL CAN BE INTEGRATED WITH:

Modula WMS

Software that can be combined with a Modula VLM or used standalone, to manage all warehouse operations.

Modula **OPTIONS**

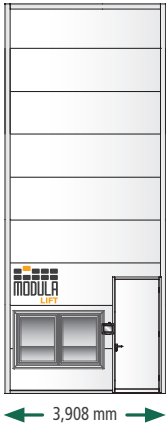
To draw the maximum benefit from the Modula automated warehouse and increase the productivity of the proposed solution, a full range of dedicated options is available.

Find out more on page 82

Find out more on page 98

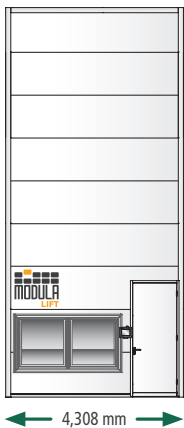
CLIMATE CONTROL MODELS

ME - MED - MEDD



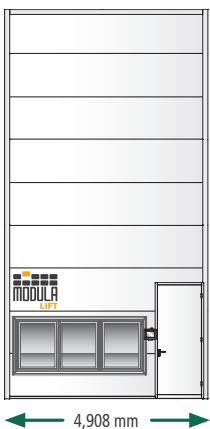
Model	Tray width (mm)	Tray depth (mm)	Tray wall height (mm)	Net tray payload (kg)	Unit footprint with INTERNAL bay (Width x Depth mm)
ME25	1,500	654	45/70/120	250	3,908x2,538
ME25D	1,500	857	45/70/120	250	3,908x3,147
ME25DD	1,500	1,257	45	250	3,908x4,347
ME25DD	1,460	1,257	70/120	250	3,908x4,347
ME50	1,500	654	70/120	500	3,908x2,538
ME50D	1,500	857	70/120	500	3,908x3,147
ME50DD	1,460	1,257	70/120	500	3,908x4,347
ME75	1,500	654	70/120	750	3,908x2,538
ME75D	1,500	857	70/120	750	3,908x3,147
ME75DD	1,460	1,257	70/120	750	3,908x4,347
ME1000	1,460	654	70/120	990	3,908x2,538
ME1000D	1,460	857	70/120	990	3,908x3,147
ME1000DD	1,460	1,257	70/120	990	3,908x4,347

MA - MAD - MADD



Model	Tray width (mm)	Tray depth (mm)	Tray wall height (mm)	Net tray payload (kg)	Unit footprint with INTERNAL bay (WidthxDepth mm)
MA25	1,900	654	45/70/120	250	4,308x2,538
MA25D	1,900	857	45/70/120	250	4,308x3,147
MA25DD	1,900	1,257	45	250	4,308x4,347
MA25DD	1,860	1,257	70/120	250	4,308x4,347
MA50	1,900	654	70/120	500	4,308x2,538
MA50D	1,900	857	70/120	500	4,308x3,147
MA50DD	1,860	1,257	70/120	500	4,308x4,347
MA75	1,900	654	70/120	750	4,308x2,538
MA75D	1,900	857	70/120	750	4,308x3,147
MA75DD	1,860	1,257	70/120	750	4,308x4,347
MA1000	1,860	654	120	990	4,308x2,538
MA1000D	1,860	857	120	990	4,308x3,147
MA1000DD	1,860	1,257	70/120	990	4,308x4,347

MC - MCD - MCDD



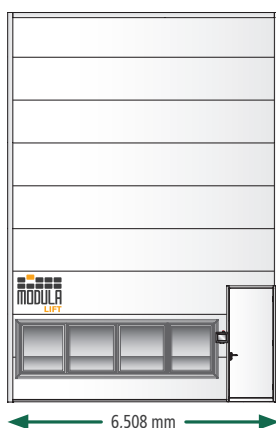
Model	Tray width (mm)	Tray depth (mm)	Tray wall height (mm)	Net tray payload (kg)	Unit footprint with INTERNAL bay (WidthxDepth mm)
MC25	2,500	654	45/70/120	250	4,908x2,538
MC25D	2,500	857	45/70/120	250	4,908x3,147
MC25DD	2,500	1,257	45	250	4,908x4,347
MC25DD	2,460	1,257	70/120	250	4,908x4,347
MC50	2,500	654	70/120	500	4,908x2,538
MC50D	2,500	857	70/120	500	4,908x3,147
MC50DD	2,460	1,257	70/120	500	4,908x4,347
MC75	2,500	654	70/120	750	4,908x2,538
MC75D	2,500	857	70/120	750	4,908x3,147
MC75DD	2,460	1,257	70/120	750	4,908x4,347
MC1000	2,460	654	120	990	4,908x2,538
MC1000D	2,460	857	120	990	4,908x3,147
MC1000DD	2,460	1,257	70/120	990	4,908x4,347

MX - MXD - MXDD



Model	Tray width (mm)	Tray depth (mm)	Tray wall height (mm)	Net tray payload (kg)	Unit footprint with INTERNAL bay (WidthxDepth mm)
MX25	3,100	654	45/70/120	250	5,508x2,538
MX25D	3,100	857	45/70/120	250	5,508x3,147
MX25DD	3,060	1,257	70/120	250	5,508x4,347
MX50	3,100	654	70/120	500	5,508x2,538
MX50D	3,100	857	70/120	500	5,508x3,147
MX50DD	3,060	1,257	70/120	500	5,508x4,347
MX75	3,100	654	70/120	750	5,508x2,538
MX75D	3,100	857	120	750	5,508x3,147
MX75DD	3,060	1,257	70/120	750	5,508x4,347
MX1000	3,060	654	120	990	5,508x2,538
MX1000D	3,060	857	120	990	5,508x3,147
MX1000DD	3,060	1,257	70/120	990	5,508x4,347

ML - MLD - MLDD



Model	Tray width (mm)	Tray depth (mm)	Tray wall height (mm)	Net tray payload (kg)	Unit footprint with INTERNAL bay (WidthxDepth mm)
ML25	4,100	654	70/120	250	6,508x2,538
ML25D	4,100	857	70/120	250	6,508x3,147
ML25DD	4,060	1,257	70/120	250	6,508x4,347
ML50	4,100	654	120	500	6,508x2,538
ML50D	4,100	857	120	500	6,508x3,147
ML50DD	4,060	1,257	120	500	6,508x4,347
ML75	4,100	654	120	750	6,508x2,538
ML75D	4,100	857	120	750	6,508x3,147
ML75DD	4,060	1,257	120	750	6,508x4,347
ML1000	4,060	654	145	990	6,508x2,538
ML1000D	4,060	857	145	990	6,508x3,147
ML1000DD	4,060	1,257	145	990	6,508x4,347